

# UPPER WALL FRAME LAYOUT

CEILING HEIGHT - 2700mm

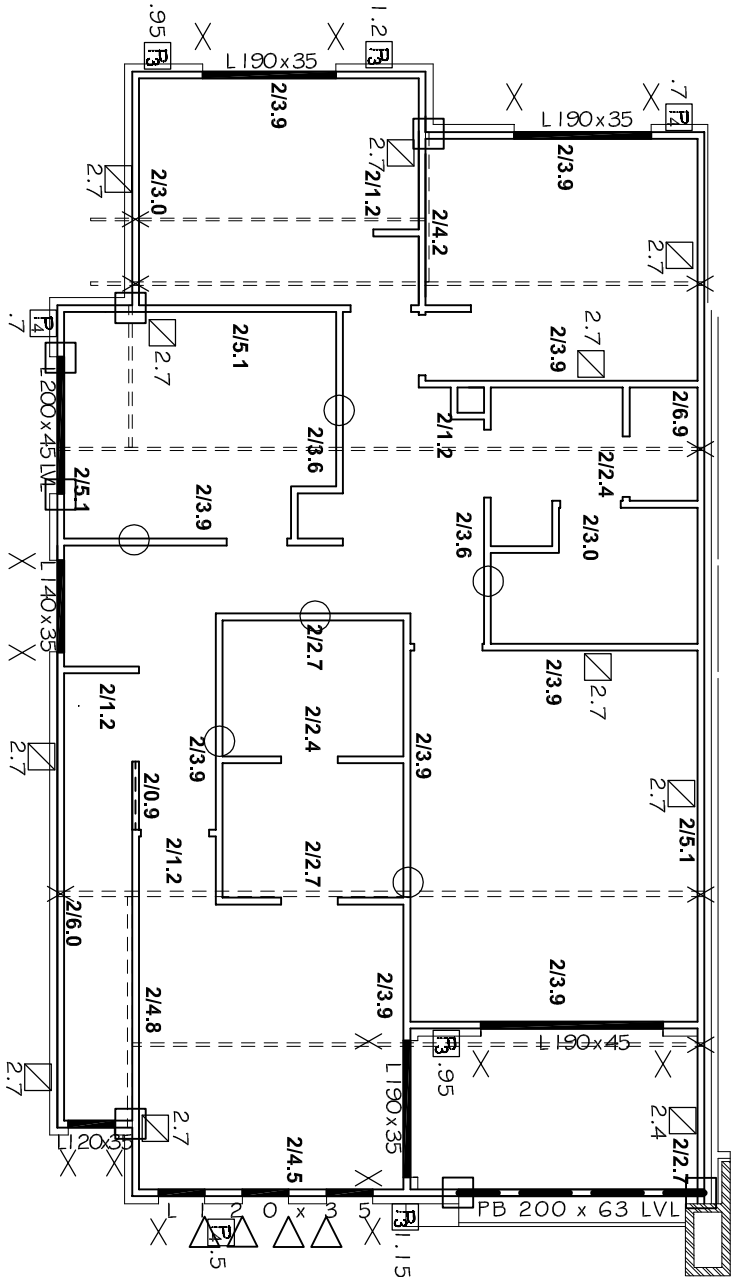
## STRUCTURAL DETAILS

T & B PLATES 90x35 MGP10 UNO  
EXTERNAL STUDS 90x35 MGP10 @ 600 CTS UNO  
STUDS POSITIONED DIRECTLY BENEATH RAFTER/TRUSSES @ MAX 600MM CTS  
INTERNAL STUDS 90x35 MGP10 @ 600 CTS UNO  
STRUTS BLOCKED OVER 2 SINGLE 90x45 MGP10 STUDS  
BLOCKING 90x70 MGP10  
NOGGING 90x35 PINE @ 1350 MAX CTS  
1/90x35 MGP10 DIRECTLY BENEATH INTERNAL SUPPORT  
ALL STRUCTURAL MATERIAL TO BE MGP10, UNO.  
JOINT GROUP=JD5  
ALL MATERIALS ALLOWED AS PER AS 1684.2-2010  
NON-LOAD BEARING WALLS UNDER  
TRUSSES SET DOWN 20mm


STUDS AT SIDES OF OPENINGS  
AND POINT LOAD STUDS  
AS SHOWN BELOW

△ = 1/90x45 MGP10  
X = 2/90x35 MGP10  
□ = 2/90x45 MGP10

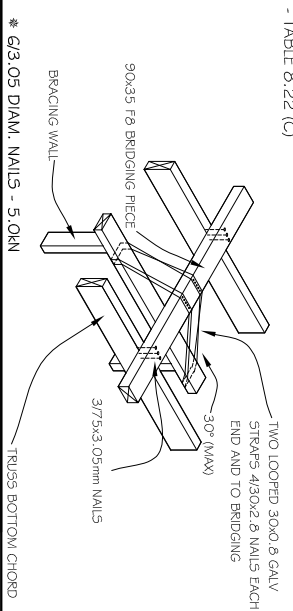
ROOF COVERING :  
C/BOND  
ROOF PITCH :  
22.5 deg  
CEILING HEIGHT :  
2700 mm  
OVERHANG :  
450/300 mm



# DWELLING 1

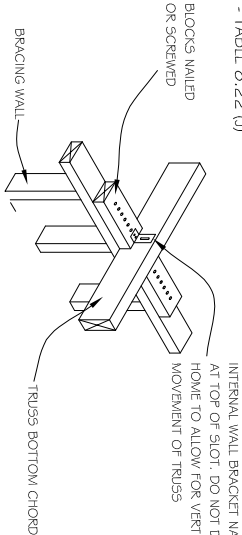
DEDICATED DEVELOPMENTS	BOJACK		AMENDMENTS	SHEET 3/5		OAKRIDGE BUILDING SERVICES
	638 BURBRIDGE RD , WEST BEACH			DATE : 14/02/19		
	Detailer: Matt Opie			SCALE: 1 : 100		
Signed: 		JOB No. TTO2397		PH : 83837222      FAX : 83837225		
WINDSPEED (per residence) :		NI		W1		
44 m² =		25 kN		W2		
27 m² =		15 kN				

## TOP PLATE FIXING DETAILS - PARALLEL TO WALL



\* 6/3.05 DIAM. NAILS - 5.0kN  
INTERNAL WALL BRACKET NAILED AT TOP OF SLOOT. DO NOT DRIVE HOME TO ALLOW FOR VERTICAL MOVEMENT OF TRUSSES

## TOP PLATE FIXING DETAILS - PERP. TO WALL

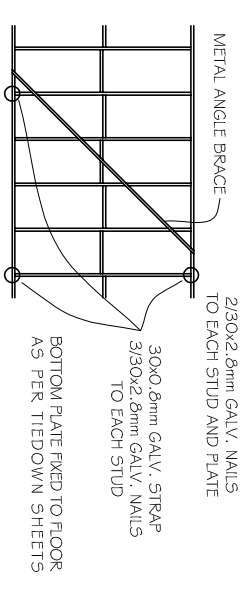


\* 6/3.05 DIAM. NAILS - 5.0kN  
\* 3/16.14 TYPE 17 SCREWS - 1.0kN

## BRACING UNITS

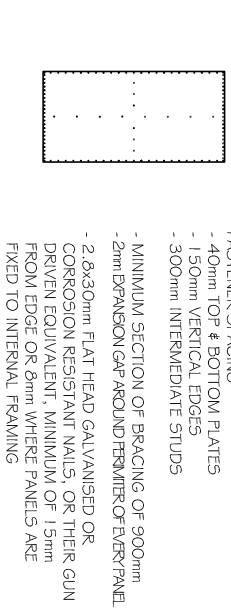
### METAL ANGLE BRACE

- TABLE B.18 (C)



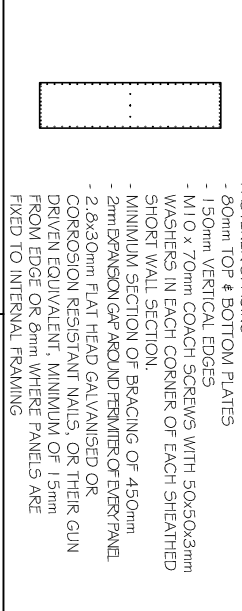
□ - 1800mm (2.7kN)	□ - 2100mm (3.15kN)
□ - 2400mm (3.6kN)	□ - 2700mm (4.05kN)

### OS BRACE TYPE #3 | SYSTEM 6.0kN/m OR EQUIVALENT



□ - 900mm (5.4kN)	□ - 1200mm (7.2kN)
-------------------	--------------------

### OS BRACE TYPE #4 | SHORT WALL BRACING | SYSTEM 2.2kN/m OR EQUIVALENT



□ - 450mm (1.0kN)	□ - 600mm (1.3kN)
-------------------	-------------------

### ○ ADDITIONAL ANGLE BRACE

### WINDSPEED (per residence) :

W1	44 m² =	25 kN
W2	27 m² =	15 kN